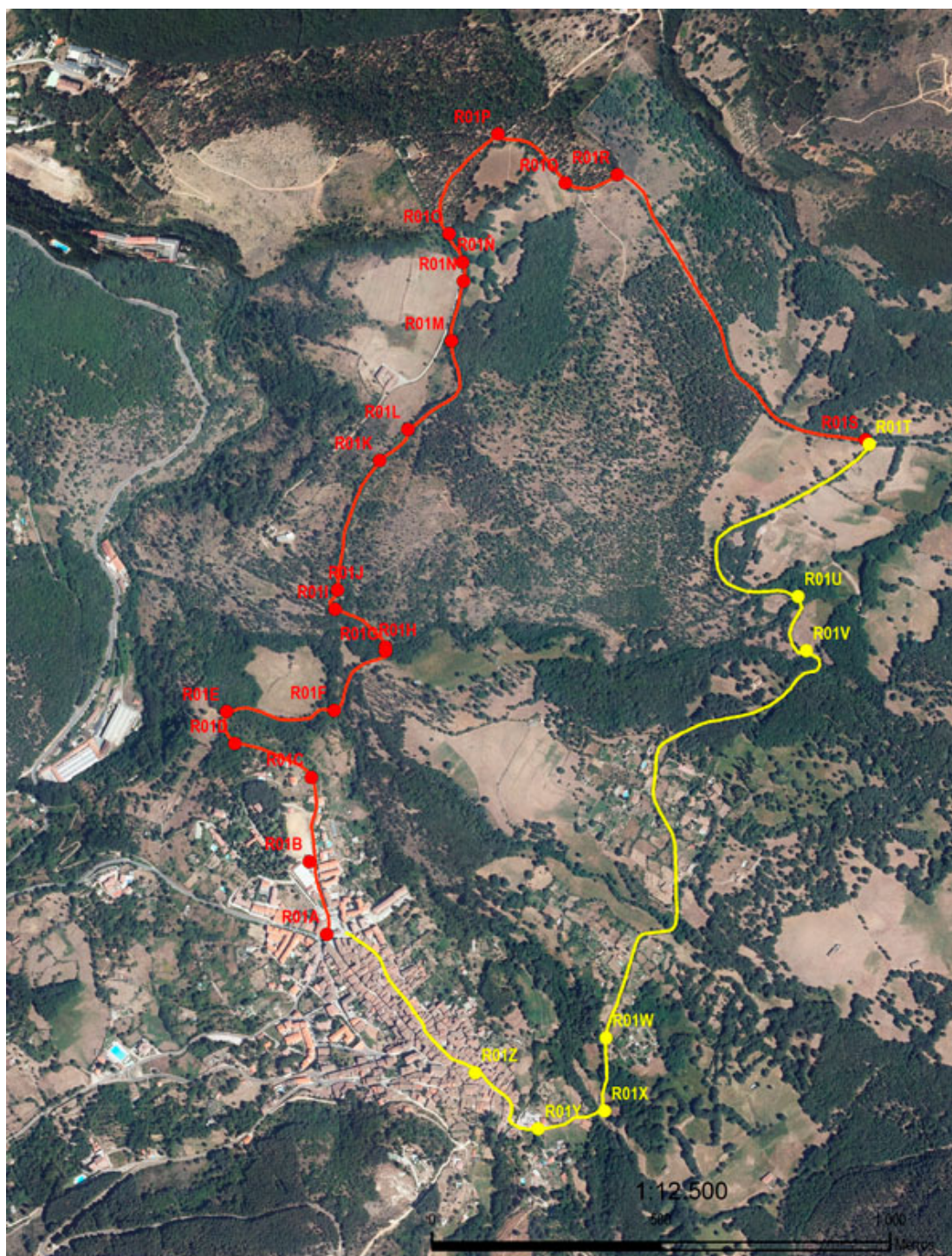




CAMINO DE LA CANALEJA STEP BY STEP



DIFFICULTY

MIDE Project:
1/2/2/2

DISTANCE

Round Trip
Distance: 7200 m.

DURATION

Round Trip
Duration: 2h (no
stops)

SING POSTS

Route Indicative
Singal Post: **RED**

LONGITUDINAL PROFILE

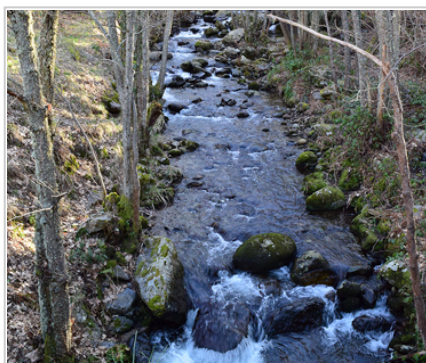
Grade 267 m

SHADE/SUN

90% / 10%



**RUTA
R01** R01G - SIGN
Signpost 1040 metres



**RUTA
R01** R01H - BRIDGE
Bridge over the Barquillo river
1045 metres



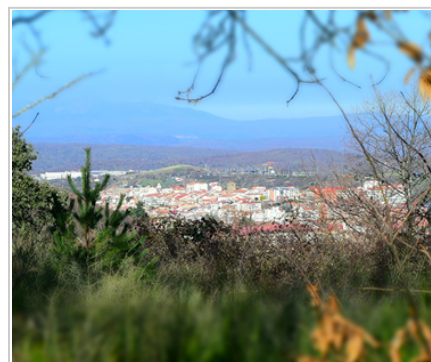
**RUTA
R01** R01I - TURN
Small ascent turning to the right
1500 metres



**RUTA
R01** R01J - SIGN
Signpost 1535 metres



**RUTA
R01** R01K - PHOTO
Viewpoint that looks out over
Béjar 1635 metres



**RUTA
R01** R01L - PHOTO
Mirador Béjar 1635 metres



**RUTA
R01** R01M - PATH
Ideal for tourists on bikes 1885
metres



**RUTA
R01** R01N - PATH
Walkway through the oak trees
2020 metres



**RUTA
R01** R01Ñ - HOSTEL
"La Canaleja" hostel 2070
metres



R01O - SIGN

Turn to the right. Enter the pine forest 2140 metres



R01P - SIGN

Turn to the right 2405 metres



R01Q - PHOTO

Viewpoint that looks out over Candelario 2600 metres



R01R - TURN

Turn to the right. Leave the pine forest 2725 metres



R01S - END

Signpost 3600 metres End of the route. Option 1: Return along the same path as before. Option 2: Go to Candelario along the road.

1. PROHIBITIONS

- **DO NOT** light a fire and **DO NOT** cut firewood
- **DO NOT** leave or bury any kind of trash
- **DO NOT** change or remove elements from the natural environment
- **DO NOT** wash tools and cars in rivers, lakes, and streams
- **DO NOT** throw cigarettes into the natural environment
- **DO NOT** step on the land planted **DO NOT** cross the trails

2. OBLIGATIONS

- Follow the route and never leave the trail
- Respect the enclosures along the way. Remember that they own
- Wind and rain guard
- Use trash bins
- Use trash bins
- Camping at established locations
- Closes gates, bars and hut doors that you find
- Respect the sings

3. **TIPS**

- Hiking is not trekking, excursions or climbing
- **Mandatory Individual Equipment** You must wear mountain boots, socks and you must not forget water
- **Sport Equipment**
 - . **Breathable, Waterproof and Thermal** Sportswear, Pants and T-shirt
 - . Capes, Raincoats
 - . **Warm Clothing** (Gloves, Scarf,...)
 - . Hat or headscarf
 - . Spare Clothes
 - . Suitable footwear and spare socks
- **Other necessary things** (preventative)
 - . Sunglasses
 - . Sun Protection Cream
 - . First aid kit
 - . Walking sticks
- **Provisioning**
 - . Water Bottle
 - . Enough food
- **Others**
 - . Backpack
 - . Map of the area / Compass / GPS
 - . Latern with backup battery
 - . Mobile with backup battery
 - . Reflective Vest

4. **RECOMMENDATIONS**

- Effort Required
- Drink water frequently and in small quantity
- Eat nuts or chocolate
- In the stops do not get cold
- Take your dog tied, there are cattle and wild animals
- Consult an environmental educator with knowledge of the environment
- Analyze the route according to your capacity
- Check the weather forecast
- Keep in good condition the roads and the walking trails. Avoid accidents, losses, and you must keep the beauty of the hiking routes

Rutasporcandelario.es picks up the effort of Candelario City Council to design an offer of Active and Familiar Tourism from the locality and its surroundings. Routes that depart most of Candelario and are designed with round or round trajectories.

Copyright © City Council of Candelario. It is forbidden the total or partial reproduction of the contents of this website without the written consent of the City Council of Candelario.